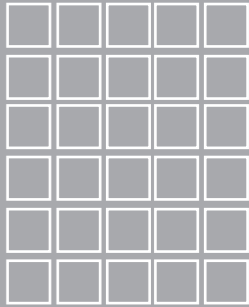


Thank you for selecting American-Standard - the benchmark of fine quality for over 100 years.
To ensure that your installation proceeds smoothly--please read these instructions carefully before you begin.

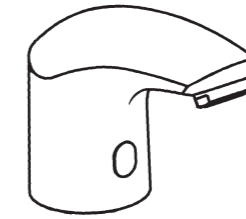
American Standard



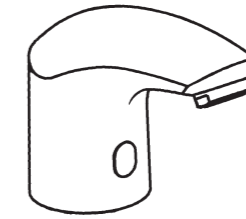
TROUBLE SHOOTING

Problem	Reason	Correction
No Detection No Flow	No battery or the battery installed wrongly or no power supply Something around the sensor is detected all the time Sensor window is dirty The connection is not connected correctly	Install battery and connection power supply Remove the things around the sensor Clean the sensor window Check the connection Replace the bottery if the old one is used out
Has detection but no flow	Just finished installation The stop valve is closed Somethings around the sensor is detected all the time Sensor window is dirty	Wait for 10 minutes Open the stop valve Remove somethings around the sensor Clean the window
Low water flow	The stop valve is not opened entirely The filters are blocked Low water pressure	Open the stop valve entirely Clean the filters Contact with water supply department
Water flow nonstop	Something around the sensor is detected all the time The water flow last for a long time	Remove the things around the sensor Close the supply valve or wait for 1 minute

Installation & Operation Instruction



WF-8601.000.50
Senseflow Sensor Faucet,DC



WF-8611.000.50
Senseflow Sensor Faucet,AC



Attention:
Please leave the manual to the customer after installation is finished.

No.	Part Noame	Q'ty	
		WF-8601	WF-8611
1	Aerator	1	1
2	Body	1	1
3	Washer	1	1
4	O-Ring	1	1
5	Bushing	1	1
6	Washer	1	1
7	Washer	1	1
8	Flexible Hose	1	1
9	Bolt	1	1
10	Washer	1	1
11	Nut	1	1
12	Sensor	1	1
13	O-Ring	1	1
14	Hanger	1	1
15	Screw	2	2
16	In-hex wrench	1	1
17	Battery Box Body	1	1
18	Circuit Board Ac	0	1
19	Plug AC	0	1
20	Battery Box	1	0
21	Battery	4	0
22	Circuit Board DC	1	0
23	Washer	1	1
24	Battery Box Cover	1	1
25	Screw	2	2
26	Anchor	4	4
27	Screw	4	4
28	Box	1	1
29	Solid Grommet	1	1
30	Solid Grommet	3	3
31	Screw	2	2
32	Connector	1	1
33	Washer	1	1
34	Solenoid valve	1	1
35	Washer	2	2
36	Nut	2	2
37	Screw	2	2
38	Valve Body	1	1
39	Screw	2	2
40	Flexible-Hose	1	1
41	Stop Valve Pedestal	1	1
42	Filter Meshwork	1	1
43	Valve Rod	1	1
44	O-Ring	1	1
45	Pedestal	1	1
46	O-Ring	1	1
47	Valve Cover	1	1
48	Control Box Cover	1	1
49	Screw	4	4

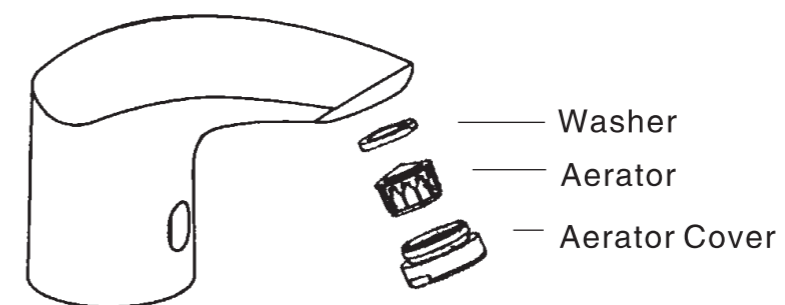
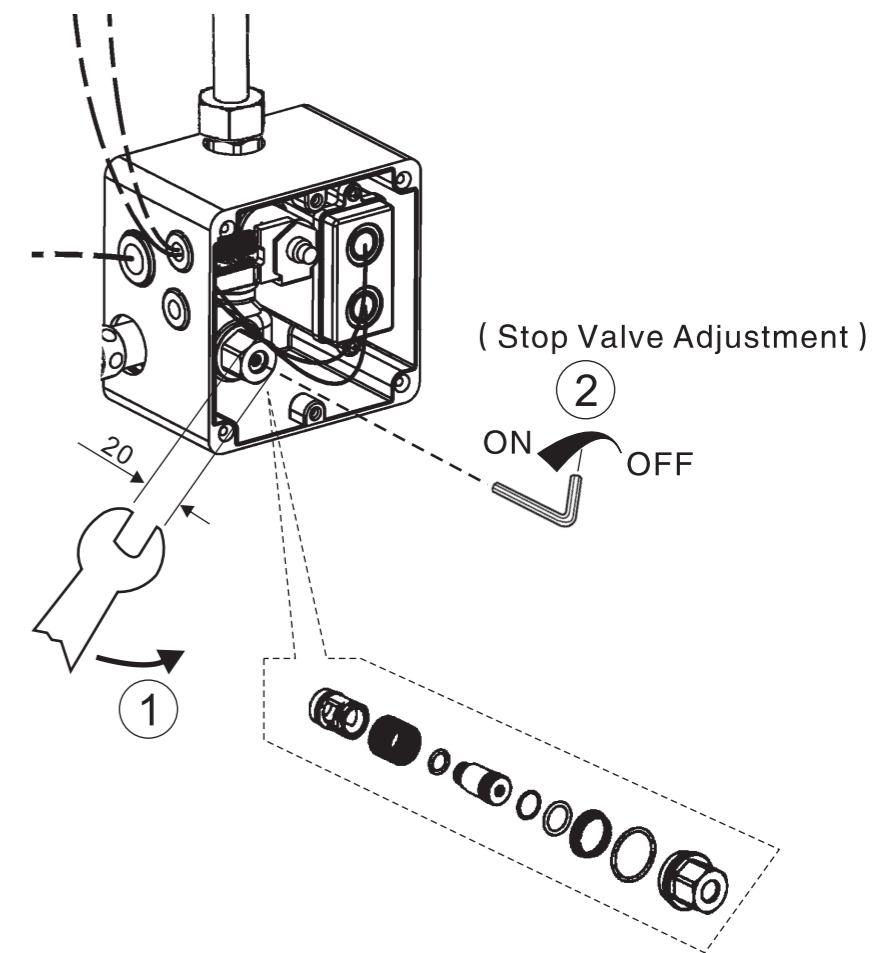
Maintenance & Repair

The Stop Valve of this sensor faucet has equipped with good quality filter, But the impure water or impuring in the water pipe will affect the water flow, in this condition, you should clean the filter, the process is as below:

- 1). Tighten the Stop Valve with Hexagonal Wrench in counter clockwise to shut down water supply.
- 2). Use the special filter key or other opening tools to screw out the Stop Valve Cap.
- 3). Remove the Filter, clean it, and put again.
- 4). Fix the Stop Valve Cap again, and loose the Stop Valve with Hexagonal Wrench. Then it resumes to work.

If necessary, you could clean the aerator too as per below step

- 1). Screw off the Aerator from the Spout.
- 2). Clean the Aerator with water.
- 3). Reinstall the Aerator to the Spout.



Instantaneous Water Supply Control

When put hand or object in the detection range, water will come out; when hand or object out of the detection range it will stop automatically.

Overtime Usage Control

- * The sensor will stop working temporarily if the usage continuous 1 minute.
- * After it stop, hand or object must leave the detection range, when hand or object put into the detection range again, the sensor will work again, otherwise, it can't work.

Replace Battery (DC)

- * If you found the indicator light twinkling continuously in 2 second interval, it means the battery is out of power, and the sensor stop work, you should change a new one.

Water Temperature adjust (Non-thermostatic Valve)

- * If you need the cold and hot water mix, suggest to use thermostatic valve control the temperature to avoid scald.

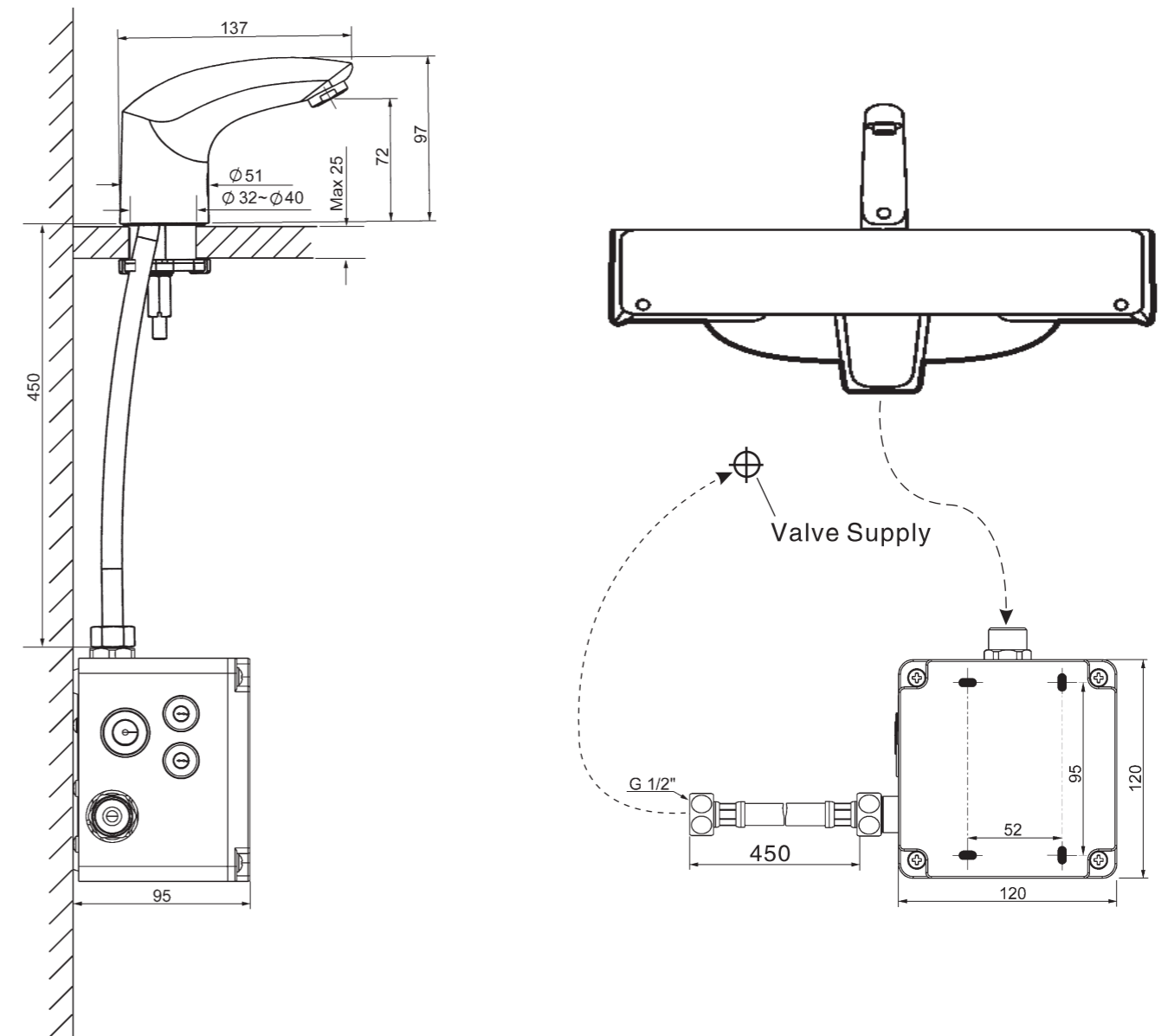
Caution

- 1). Water supply for this product should be drinking water.
Seawater is forbidden.
- 2). Please don't knock on the main component .
- 3). Strong ultraviolet radiation should keep away from sensor window.
- 4).Keep the sensor window clean. And don't Knock on it.
- 5).The sensor window should be cleaned with neutral detergent and soft cloth.
- 6). Organic solvent shouldn't spray to the sensor window directly.

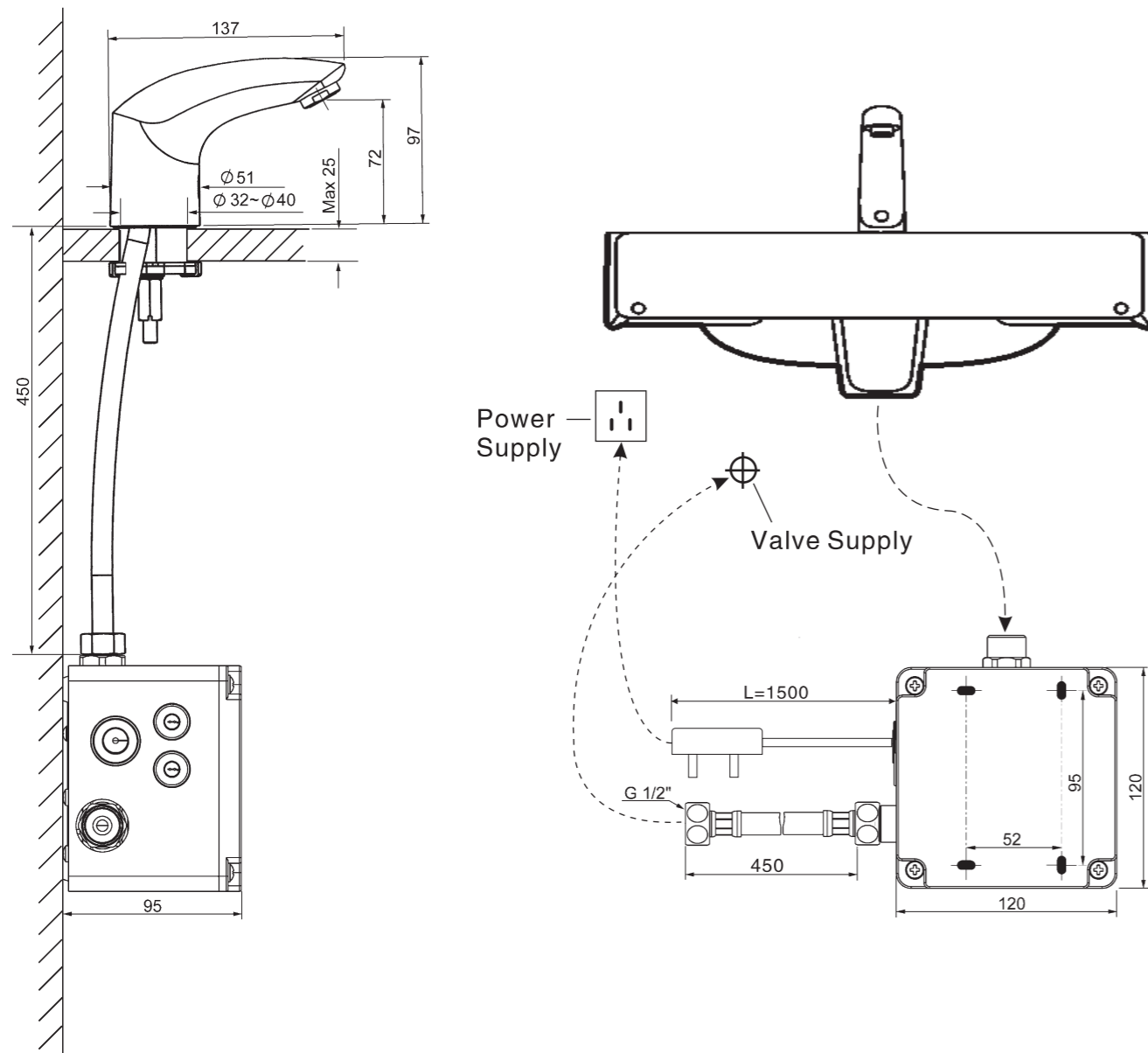
Specification

Type	WF-8601.000.50 (DC) / WF-8611.000.50 (AC)
Battery	4Pcs1.5V AA Basic Battery (DC) / 6V(DC) / 220V (AC)
Induction Mode	Infrared Induction
Detection Distance (Default)	10cm~40cm (Default Distance 18cm) (White Copy Paper)
Pressure Requirement	0.1 ~ 0.55Mpa
Pipe Size	G 1/2"
Environment Temperature	1°C ~ 55°C
Acceptable Water temperature	1°C ~ 45°C
Water saving setting	Usage time over 59 Seconds, it will shut off automatically

Dimension (WF-8601.000.50)



Dimension (WF-8611.000.50)



Caution

- * Remove all the impurities in pipes before beginning to avoid clogging.
- * Check installation distances with the dimension diagram to ensure correct installation.
- * To avoid surface damage by improper cleaning, please refer the attached care and Maintenance instruction.

Working Condition:

- * Environment temperature: 1 ~ 55°C
- * Acceptable water temperature: 1 ~ 45°C
- * Available water pressure: 0.1 ~ 0.55Mpa

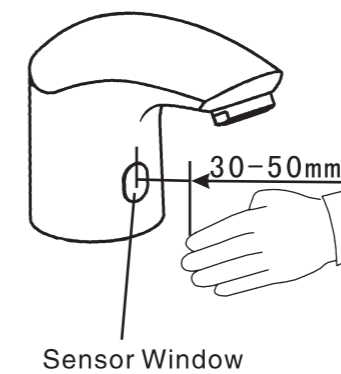
Test

- * Make sure the connection of power and water supply.
- * Open the water supply, Make sure no leakage in all connection.
- * When enter the sensor zone, sensor detect and flush , When leave the detection zone, valve will flush again then stop, and waiting for start.
- * Make sure every thing in working order.

Usage Instructions

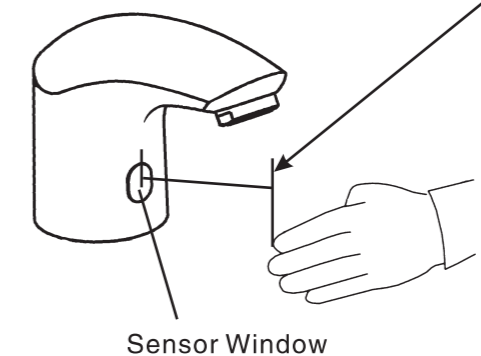
Detection Zone Adjustment

1. Open the valve box, unplug signal wire from circuite board, wait for a moment than plug it again.
2. Put hand in the distance of 30~50mm in front of the sensor window when the light is blinking.

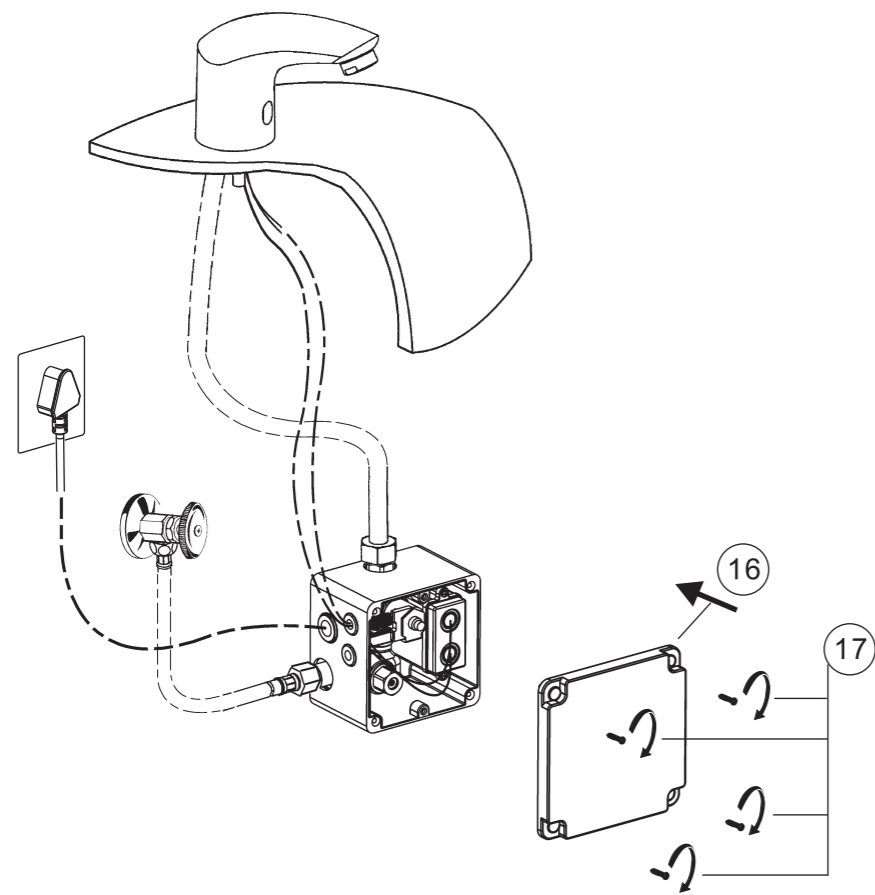


3. When the light turn off, move hand away , the range had been set successfully.

If the default distance is 150mm

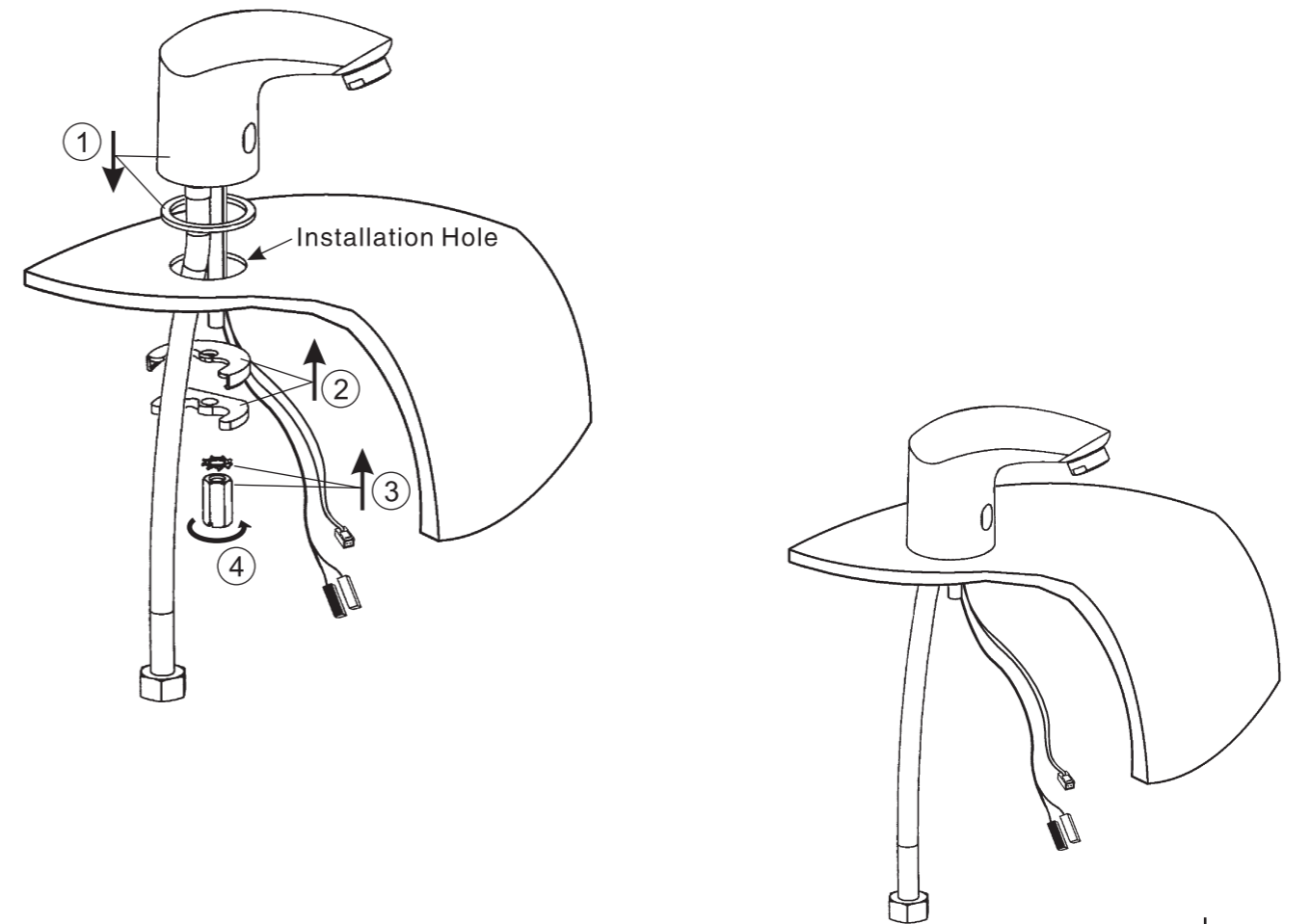


Install (Valve cover)



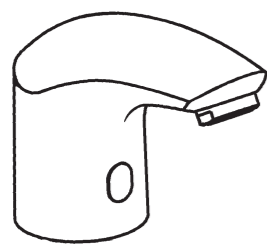
Install (Body and control Valve)

- * Before installation, Please lay out water supply pipe and the cables according to the reference drawing, to lay the electrical source (AC).
- * Make sure the installation of battery and don't use the old and new one together.

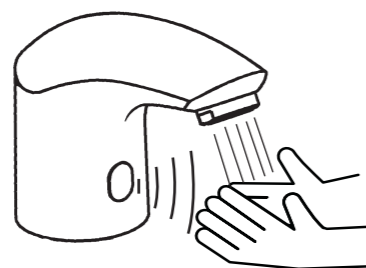


Usage

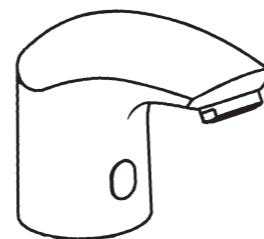
* The sketch for usage mode



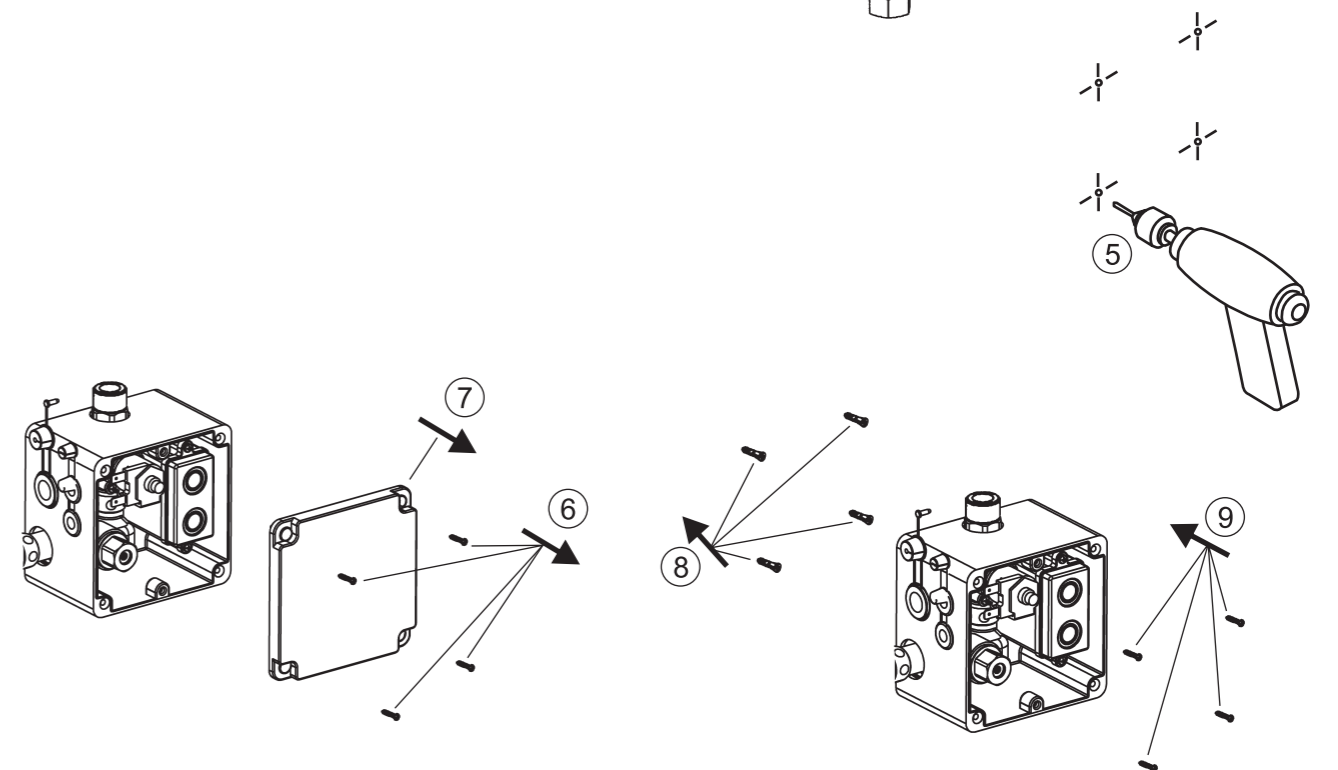
Waiting



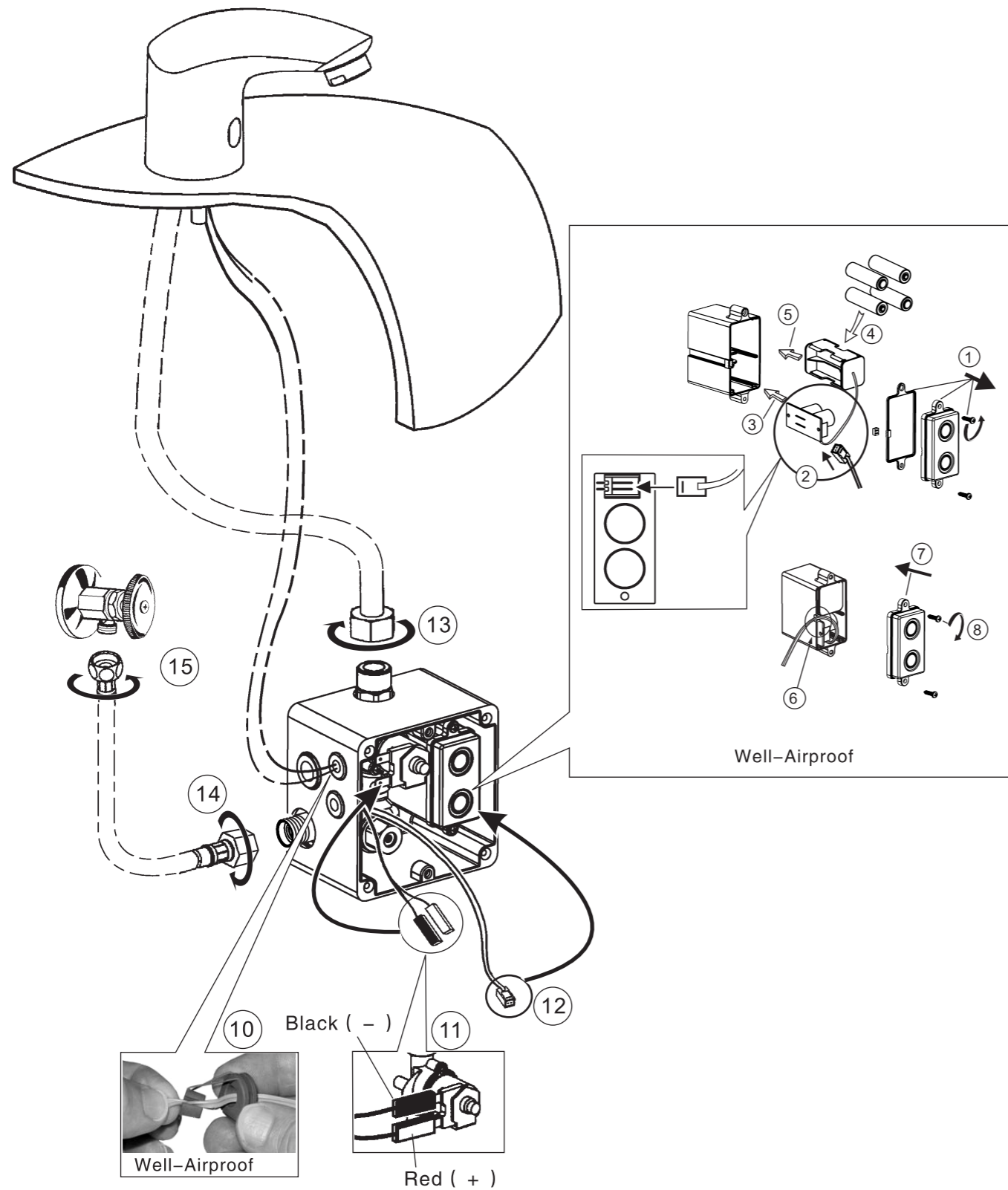
Sensor detects and water come out automatically



Waiting

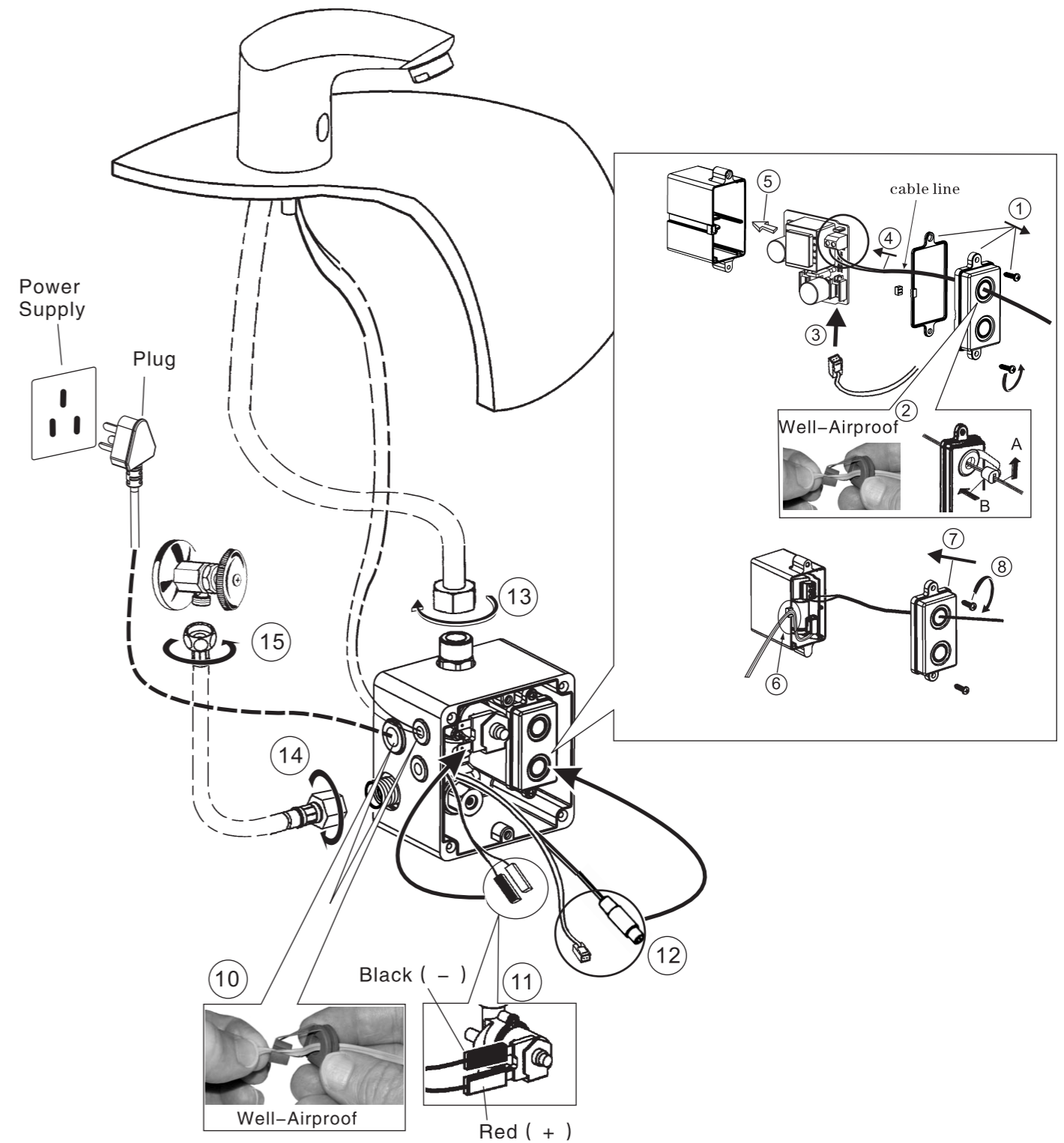


Install(WF-8601.000.50) (Cable and Pipe)



Warning: While the sensor light starts flashing after power is available, nothing should be close to the sensor to avoid changing the default detection range.

Install (WF-8611.000.50)



Warning: While the sensor light starts flashing after power is available, nothing should be close to the sensor to avoid changing the default detection range.