

## Neo Modern

Wall Hung Lav with Semi Pedestal Lav  
TF-0953 / F712



### FEATURES

- Easy to clean
- Overflow hole on back position

### SPECIFICATIONS

- Faucet Drillings: Single / T4" / T8"
- Basin Dimensions: W450\*L553\*H460 mm.
- Material: Vitreous China

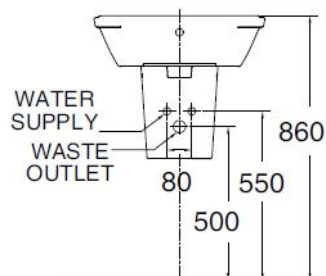
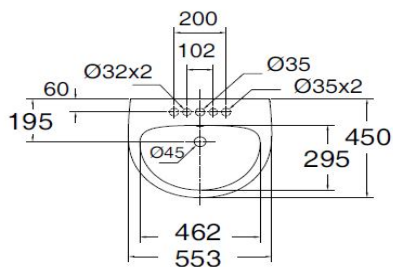
### COLOR AVAILABILITY

- White (WT)

### INCLUDED COMPONENTS

- Overflow ring
- Wall fixing set for Lavatory
- Floor Fixing (Ped)
- Installation manual

### DIMENSIONAL DRAWING



### SHIPPING WEIGHT

- Net Weight:
- Gross Weight:

### STANDARDS CRITERIA

- TIS Standard
- EN Standard
- ASME Standard

